

TOHO GROUP FILM DISTRIBUTION DIVISION PRELIMINARY BOX OFFICE REPORT: MAY 2026

[Film Business Segment Production and Distribution business]

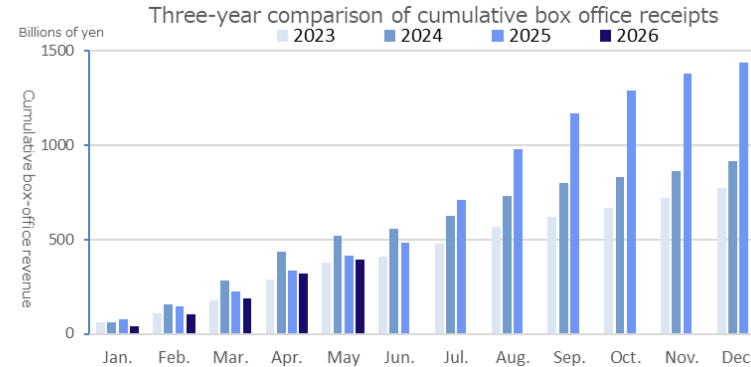
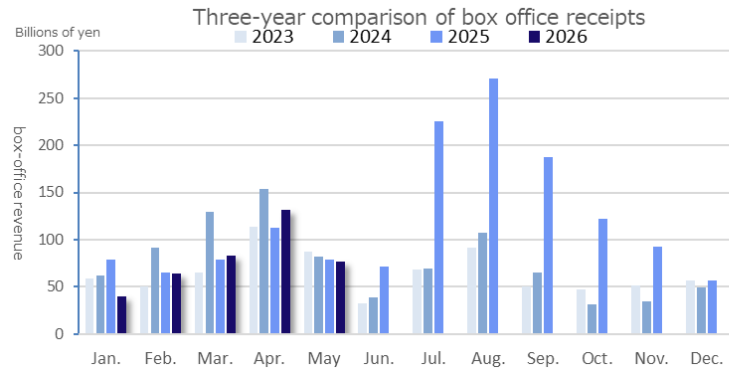
The box office revenues of the Production and Distribution division (domestic films distributed by TOHO Distribution Dept.) for May 2026 are as follows :

7,668 million yen (year on year 97.4%) annual box office revenue **39,513 million yen (year on year 95.5%)**

2026	Jan.	Feb.	Mar.	Apr.	May	Jun.	Jul.	Aug.	Sep.	Oct.	Nov.	Dec.	annual account
box office revenue	3,955	6,436	8,275	13,177	7,668								39,513
YoY	50.4%	99.4%	104.6%	117.1%	97.4%								95.5%
annual account	-	10,391	18,667	31,844	39,513								
YoY	-	72.5%	83.9%	95.1%	95.5%								
2025	7,853	6,472	7,912	11,253	7,876	7,173	22,512	27,059	18,731	12,163	9,209	5,626	143,843
2024	6,211	9,137	12,948	15,354	8,149	3,871	6,920	10,687	6,538	3,165	3,449	4,906	91,341
2023	5,911	5,078	6,547	11,388	8,767	3,182	6,867	9,148	5,070	4,689	5,175	5,631	77,458

(Unit: million yen)

Major Works in Operation: *Detective Conan: Fallen Angel of the Highway*, *SAKAMOTO DAYS*, *One Last Love Letter*, *Your Own Quiz*, *SUPER BEAVER LIVE & DOCUMENTARY -Where We Are*, *Sheep in the Box*, etc.



Monthly Box Office

[Film Business Segment Production and Distribution business]

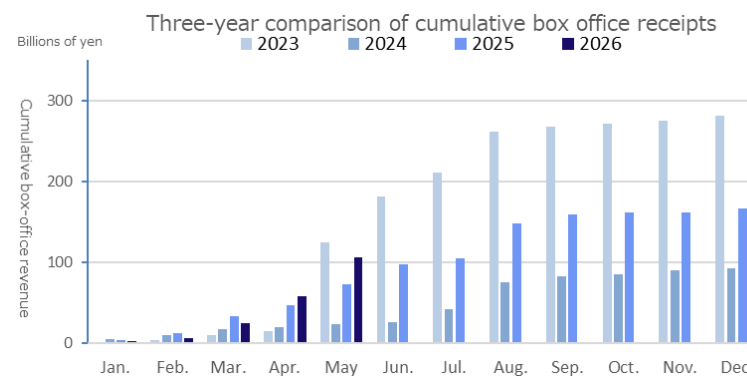
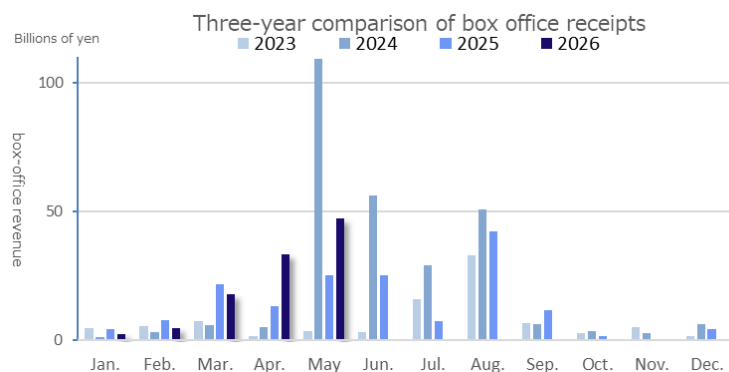
Foreign Film Distribution Division : The box office revenues (foreign films distributed by Toho-Towa, Towa Pictures, and TOHO Distribution Dept.) for May 2026 are as follows:

4,741 million yen (year on year 188.0%) annual box office revenue **10,588 million yen (year on year 145.6%)**

2026	Jan.	Feb.	Mar.	Apr.	May	Jun.	Jul.	Aug.	Sep.	Oct.	Nov.	Dec.	annual account
box office revenue	234	475	1,789	3,347	4,741								10,588
YoY	52.3%	59.6%	82.3%	251.2%	188.0%								145.6%
annual account	-	709	2,498	5,846	10,588								
YoY	-	56.9%	73.1%	123.0%	145.6%								
2025	447	798	2,173	1,332	2,522	2,542	741	4,228	1,189	178	74	428	16,658
2024	497	556	742	181	356	319	1,617	3,324	660	283	512	178	9,231
2023	134	335	586	515	10,936	5,613	2,937	5,102	644	364	292	637	28,103

(Unit: million yen)

Major Works in Operation: *The Super Mario Galaxy Movie*, *Top Gun: Maverick*, *Wicked: For Good*, *Wuthering Heights*, etc.



TOHO GROUP FILM DISTRIBUTION DIVISION PRELIMINARY BOX OFFICE REPORT: APRIL 2026

[Film Business Segment Production and Distribution business]

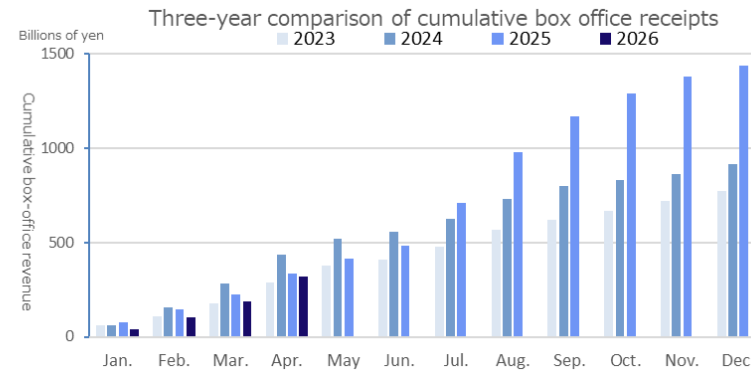
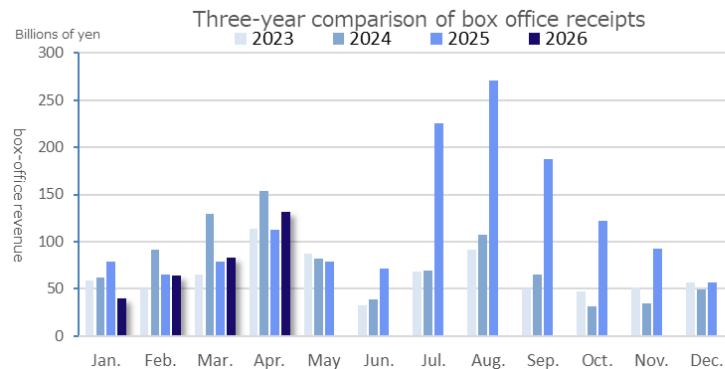
The box office revenues of the Production and Distribution division (domestic films distributed by TOHO Distribution Dept.) for April 2026 are as follows :

13,177million yen (year on year 117.1%) annual box office revenue **31,844 million yen (year on year 95.1%)**

2026	Jan.	Feb.	Mar.	Apr.	May	Jun.	Jul.	Aug.	Sep.	Oct.	Nov.	Dec.	annual account
box office revenue	3,955	6,436	8,275	13,177									31,844
YoY	50.4%	99.4%	104.6%	117.1%									95.1%
annual account	-	10,391	18,667	31,844									
YoY	-	72.5%	83.9%	95.1%									
2025	7,853	6,472	7,912	11,253	7,876	7,173	22,512	27,059	18,731	12,163	9,209	5,626	143,843
2024	6,211	9,137	12,948	15,354	8,149	3,871	6,920	10,687	6,538	3,165	3,449	4,906	91,341
2023	5,911	5,078	6,547	11,388	8,767	3,182	6,867	9,148	5,070	4,689	5,175	5,631	77,458

(Unit:million yen)

Major Works in Operation: *Detective Conan: Fallen Angel of the Highway*, *Doraemon the Movie: New Nobita and the Castle of the Undersea Devil*, *One Last Love Letter*, *SAKAMOTO DAYS*, *ONE OK ROCK DETOX JAPAN TOUR 2025 AT NISSAN STADIUM IN CINEMAS*, etc.



Monthly Box Office

[Film Business Segment Production and Distribution business]

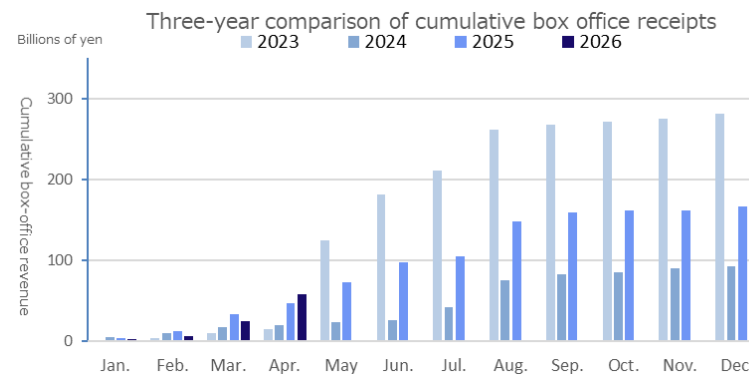
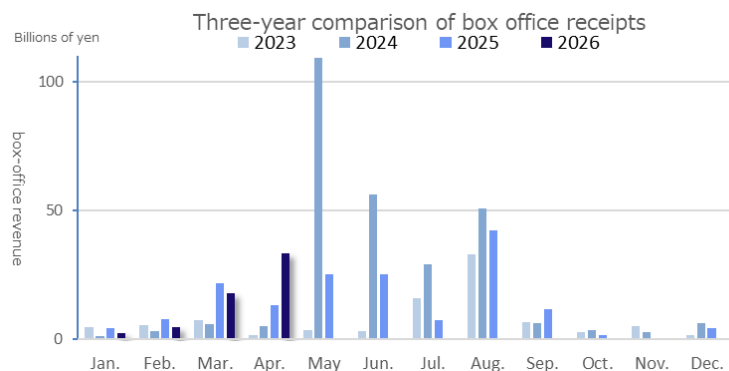
Foreign Film Distribution Division : The box office revenues (foreign films distributed by Toho-Towa, Towa Pictures, and TOHO Distribution Dept.) for April 2026 are as follows:

3,347 million yen (year on year 251.2%) annual box office revenue **5,846 million yen (year on year 123.0%)**

2026	Jan.	Feb.	Mar.	Apr.	May	Jun.	Jul.	Aug.	Sep.	Oct.	Nov.	Dec.	annual account
box office revenue	234	475	1,789	3,347									5,846
YoY	52.3%	59.6%	82.3%	251.2%									123.0%
annual account	-	709	2,498	5,846									
YoY	-	56.9%	73.1%	123.0%									
2025	447	798	2,173	1,332	2,522	2,542	741	4,228	1,189	178	74	428	16,658
2024	497	556	742	181	356	319	1,617	3,324	660	283	512	178	9,231
2023	134	335	586	515	10,936	5,613	2,937	5,102	644	364	292	637	28,103

(Unit: million yen)

Major Works in Operation: *The Super Mario Galaxy Movie*, *Wicked: For Good*, *Wuthering Heights*, *Gabby's Dollhouse: The Movie*, etc.



TOHO GROUP FILM DISTRIBUTION DIVISION PRELIMINARY BOX OFFICE REPORT: MARCH 2026

[Film Business Segment Production and Distribution business]

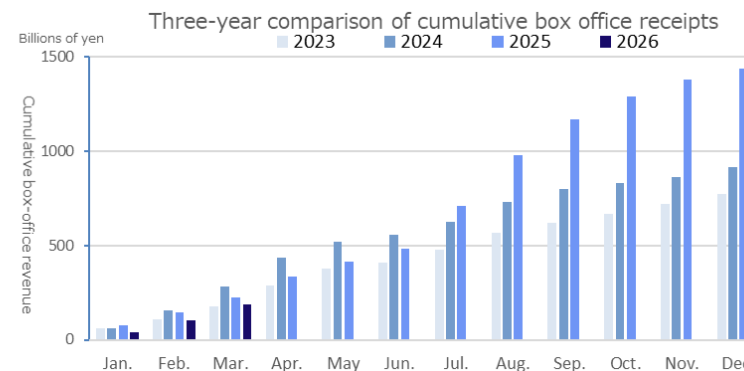
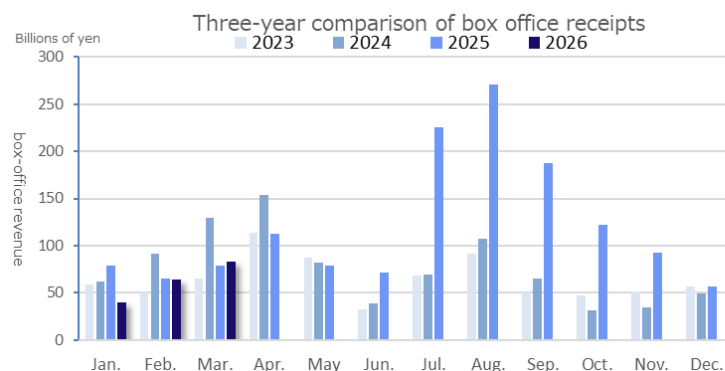
The box office revenues of the Production and Distribution division (domestic films distributed by TOHO Distribution Dept.) for March 2026 are as follows :

8,275million yen (year on year 104.6%) annual box office revenue **18,667 million yen (year on year 83.9%)**

2026	Jan.	Feb.	Mar.	Apr.	May	Jun.	Jul.	Aug.	Sep.	Oct.	Nov.	Dec.	annual account
box office revenue	3,955	6,436	8,275										18,667
YoY	50.4%	99.4%	104.6%										83.9%
annual account	-	10,391	18,667										
YoY	-	72.5%	83.9%										
2025	7,853	6,472	7,912	11,253	7,876	7,173	22,512	27,059	18,731	12,163	9,209	5,626	143,843
2024	6,211	9,137	12,948	15,354	8,149	3,871	6,920	10,687	6,538	3,165	3,449	4,906	91,341
2023	5,911	5,078	6,547	11,388	8,767	3,182	6,867	9,148	5,070	4,689	5,175	5,631	77,458

(Unit:million yen)

Major Works in Operation: *Doraemon the Movie: New Nobita and the Castle of the Undersea Devil, Until We Meet Again, Kyojo Requiem, GOLDEN KAMUY - THE ABASHIRI PRISON RAID, KOKUHO, The Last Song You Left Behind, Demon Slayer: Kimetsu no Yaiba Infinity Castle, etc.*



Monthly Box Office

[Film Business Segment Production and Distribution business]

Foreign Film Distribution Division : The box office revenues (foreign films distributed by Toho-Towa, Towa Pictures, and TOHO Distribution Dept.) for March 2026 are as follows:

1,789 million yen (year on year 82.3%) annual box office revenue **2,498 million yen (year on year 73.1%)**

2026	Jan.	Feb.	Mar.	Apr.	May	Jun.	Jul.	Aug.	Sep.	Oct.	Nov.	Dec.	annual account
box office revenue	234	475	1,789										2,498
YoY	52.3%	59.6%	82.3%										73.1%
annual account	-	709	2,498										
YoY	-	56.9%	73.1%										
2025	447	798	2,173	1,332	2,522	2,542	741	4,228	1,189	178	74	428	16,658
2024	497	556	742	181	356	319	1,617	3,324	660	283	512	178	9,231
2023	134	335	586	515	10,936	5,613	2,937	5,102	644	364	292	637	28,103

(Unit: million yen)

Major Works in Operation: *Wicked: For Good*, *Wuthering Heights*, *Gabby's Dollhouse: The Movie*, *Primate*, etc.

